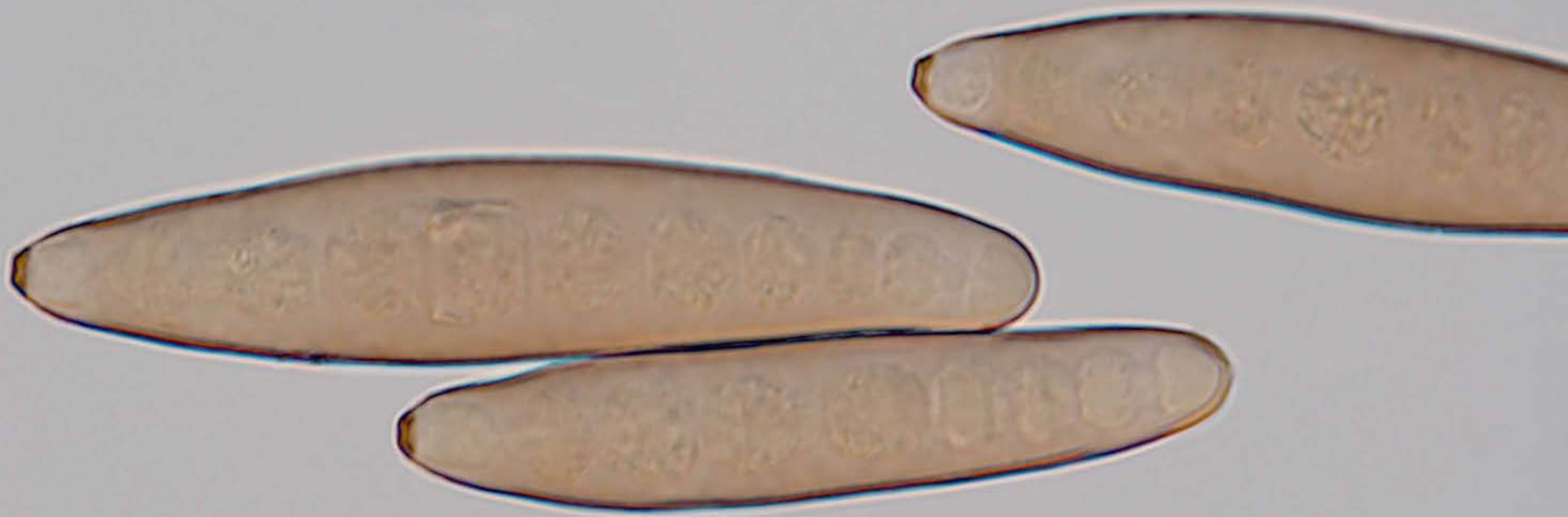


Introduction to *Bipolaris* and *Curvularia*

AANZFTA ECWP Diagnosis of Plant Diseases Workshops, 22-26 June 2015



Bipolaris and *Curvularia*

Two large genera of several segregated from *Helminthosporium*.

What are the other genera? What unites them morphologically?



prominent hilum

conidia

conidiogenous cells with circular scars

geniculate

septate

Bipolaris and *Curvularia*

Prior to molecular studies, the taxonomy of *Bipolaris* and *Curvularia* relied on host range and morphology



Issued 10th November 1987

Mycological Papers, No. 158

**GRAMINICOLOUS SPECIES OF
BIPOLARIS, CURVULARIA, DRECHSLERA,
EXSEROHILUM AND THEIR
TELEOMORPHS**

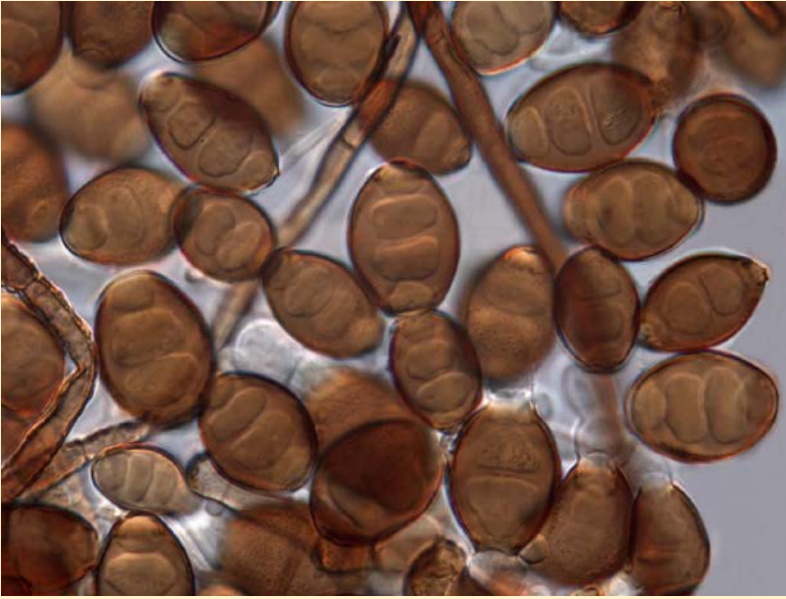
by

A. SIVANESAN

C·A·B International Mycological Institute

C·A·B INTERNATIONAL MYCOLOGICAL INSTITUTE

Bipolaris and *Curvularia*



Bipolaris and *Curvularia*

Teleomorphic stages

- Rarely formed in cultures
- Most names in *Cochliobolus* and *Pyrenophora* are synonyms of *Bipolaris* and *Curvularia* respectively.



Group task

What are the important plant diseases caused by *Bipolaris* and *Curvularia* in your country?

How do you identify species of *Bipolaris* and *Curvularia* in your laboratory?

Give three facts that you find interesting about *Bipolaris* and *Curvularia*.

